

PAMS Technical Documentation

NPM-9 Series Transceivers

Disassembly Instructions

CONTENTS

Disassembly of NPM-9 3

Disassembly of NPM-9

1. DISASSEMBLY INSTRUCTIONS

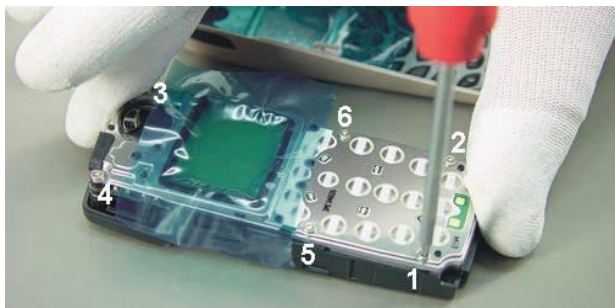
Attention : Before starting this procedure you must take care of ESD precautions like being in your ESD-area and connecting your arm wrist.



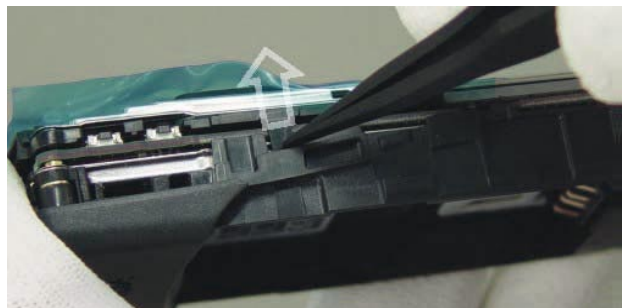
Push the unlock-button and move the battery cover in direction to the System Connector.



Pull the A-Cover and B-Cover apart to open the unit.



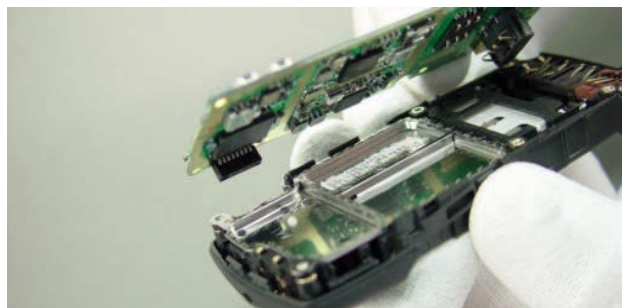
Remove the six screws with screwdriver Torx T6 in the shown order. When assembling the reverse order has to be taken with a torque of 17Ncm.



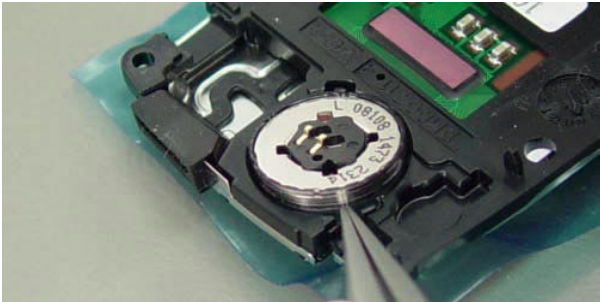
Before removing the UI module LU9 this clip has to be released with a screwdriver or tweezers.



Now the UI module can be removed. Please take care not to damage the board to board connector afterwards which is located on the CMT module.



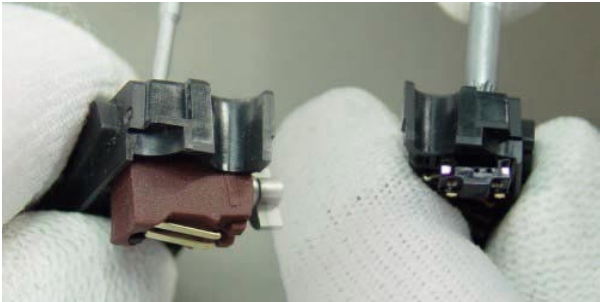
Lift up the CMT module LA5 carefully. Sometimest it happens that the battery connector gets stuck at the SIM CardCover. Take care not to bend the spring contacts of the battery connector.



If you need to change the speaker you shouldn't grab it at the spring connectors. Take tweezers and lift the speaker as shown in the picture.



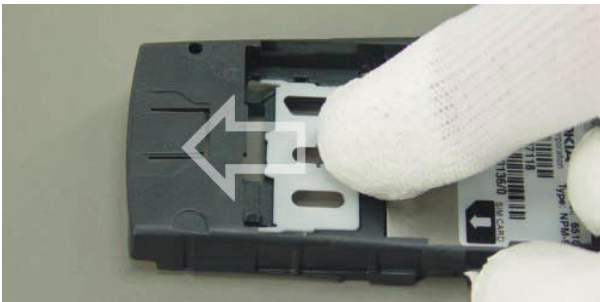
Turn around the B-Cover. If the System Connector is jammed, press with tweezers between cover and connector.



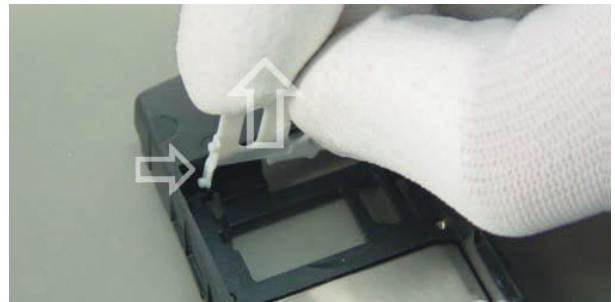
The System Connector contains Vibra Motor and Microphone, which can be easily pushed out of the System Connector.



Grab the Keymat and remove it. It is always good to protect the window also from the inner side.



If you need to remove or change the SIM Card Cover you first have to release it.



The second step is to push one hinge to the middle to lift up the Card Cover.

New screws have a special locking compound on the thread. Never take used screws a second time! When assembling the phone, screws must be tightened with a torque of 17 Ncm ! The final GoNoGo test verifies that the electrical specifications will be fulfilled.

